

THIS DRAWING IS AN UNCONTROLLED COPY UNLESS STAMPED OTHERWISE

CONTRACTORS SHALL VERIFY JOINT DIMENSIONS BEFORE ANY JOINT COMMENCEMENT. ALL JOINT DIMENSIONS SHALL BE SUBMITTED TO THE SUPERINTENDENT AND MANUFACTURE SHALL NOT COMMENCE PRIOR TO THE RETURN OF DIMENSIONED JOINT DRAWINGS SIGNED BY THE CONSULTANT. DIMENSIONS SHALL TAKE PRECEDENCE OVER SCALES. THIS DRAWING SHOULD BE READ IN CONJUNCTION WITH ALL RELEVANT CONTRACT SPECIFICATIONS AND DRAWINGS COPYRIGHT OF THIS DRAWING IS VESTED IN WARDLE

General Notes ALL JOINERY TO REFER TO INTERIOR ELEVATIONS (AR100 SERIES)

18mm E1 MDF CARCASS THROUGHOUT UNLESS OTHERWISE NOTED.
ALL NON EXPOSED CARCASS TO BE MATCHING LAMINATE UNLESS OTHERWISE NOTED.

ALL NON EXPOSED CARCASS TO BE BLACK LAMINATE TO JOINERY RECEIVING TIMBER VENEER FINISH, REFER MATERIALS SCHEDULE [PL-05]

ALL NON EXPOSED CARCASS TO BE WHITE LAMINATE TO JOINERY RECEIVING STAINLESS STEEL CLADDING, REFER MATERIALS SCHEDULE [PL-01]

ALL EXPOSED EDGES TO TIMBER VENEER PANELS TO JOIN TO RECEIVE 3mm THK MATCHING SOLID EDGES, UNLESS OTHERWISE NOTED.

SPLIT BATTENS TO BE 12mm UNLESS OTHERWISE NOTED.

APPLY MATCHING LAMINATE ABS EDGING TO LAMINATED BENCHTOPS, UNLESS OTHERWISE NOTED

REFER TO '1300 - MATERIALS SCHEDULE' FOR A DESCRIPTION OF THE MATERIAL CODES AS SHOWN ON THIS DRAWING. [TV-02]

REFER TO '1400 - FIXTURES, FITTINGS & EQUIPMENT SCHEDULE' FOR A DESCRIPTION OF THE FF&E CODES AS SHOWN ON THIS DRAWING. [EQU-02]

ALL JOINERY LOCKS TO BE [JH-02] UNLESS OTHERWISE NOTED.

REFER TO DRAWING AR7300 FOR MOUNTING HEIGHTS FOR ALL SERVICES FIXTURES, UNLESS OTHERWISE DIMENSIONED ON THE JOINERY ELEVATIONS.

ALL CORNER JUNCTIONS TO BE MITRED UNLESS OTHERWISE NOTED.

ALL UPHOLSTERY STITCHING TO MATCH FABRIC COLOUR UNLESS OTHERWISE NOTED

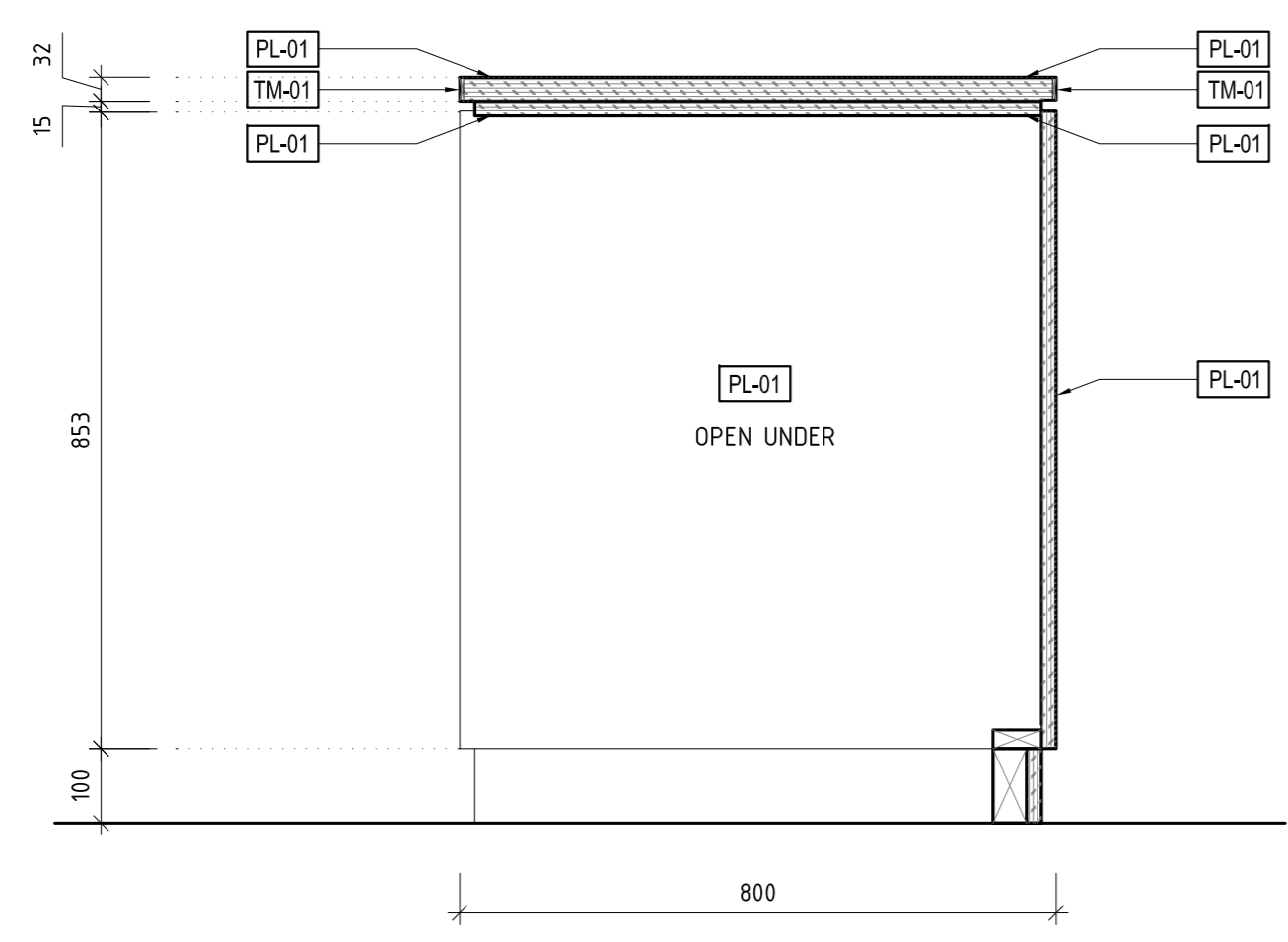
DRAWINGS TO BE READ IN CONJUNCTION WITH AR1200 SERIES INTERNAL ARRANGEMENT PLANS TO COORDINATE FIXINGS INTO PARTITIONS WHERE NECESSARY

FS = FIXED SHELF
AS = ADJUSTABLE SHELF

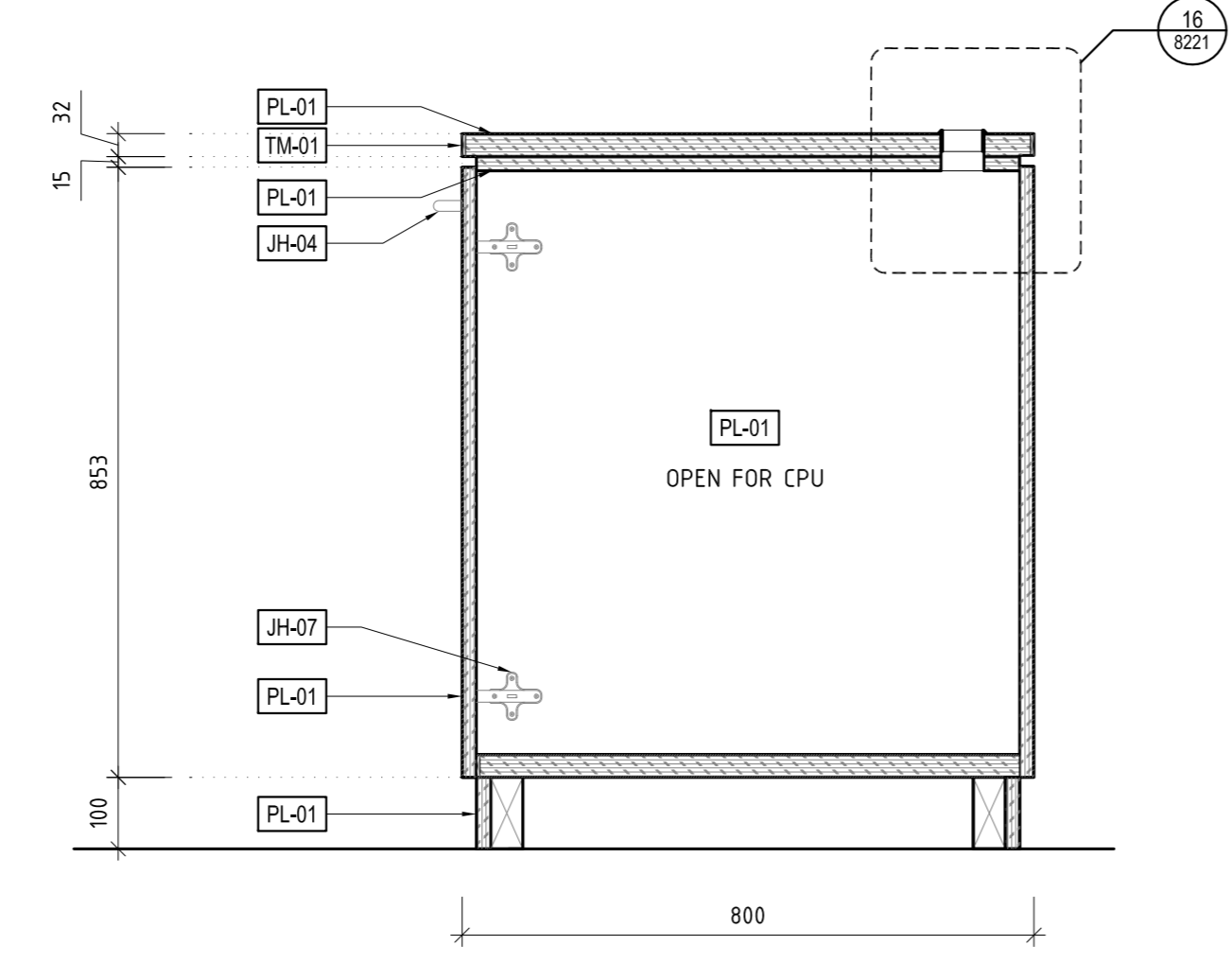
FP = FIXED PANEL
PJ = PANEL JOIN, MAXIMUM WIDTH 2mm

C.O.S = CHECK ON SITE - DIMENSIONS MUST BE VERIFIED ON SITE BY CONTRACTOR PRIOR TO COMMENCEMENT OF CONSTRUCTION.

NOM. = NOMINAL
TYP. = TYPICAL
SIM. = SIMILAR
MIR. = MIRROR
FCL = FINISHED CEILING LEVEL
FFL = FINISHED FLOOR LEVEL
SSL = STRUCTURAL SLAB LEVEL
C = CENTRELINE
DIRECTION OF GRAIN / LAMSH



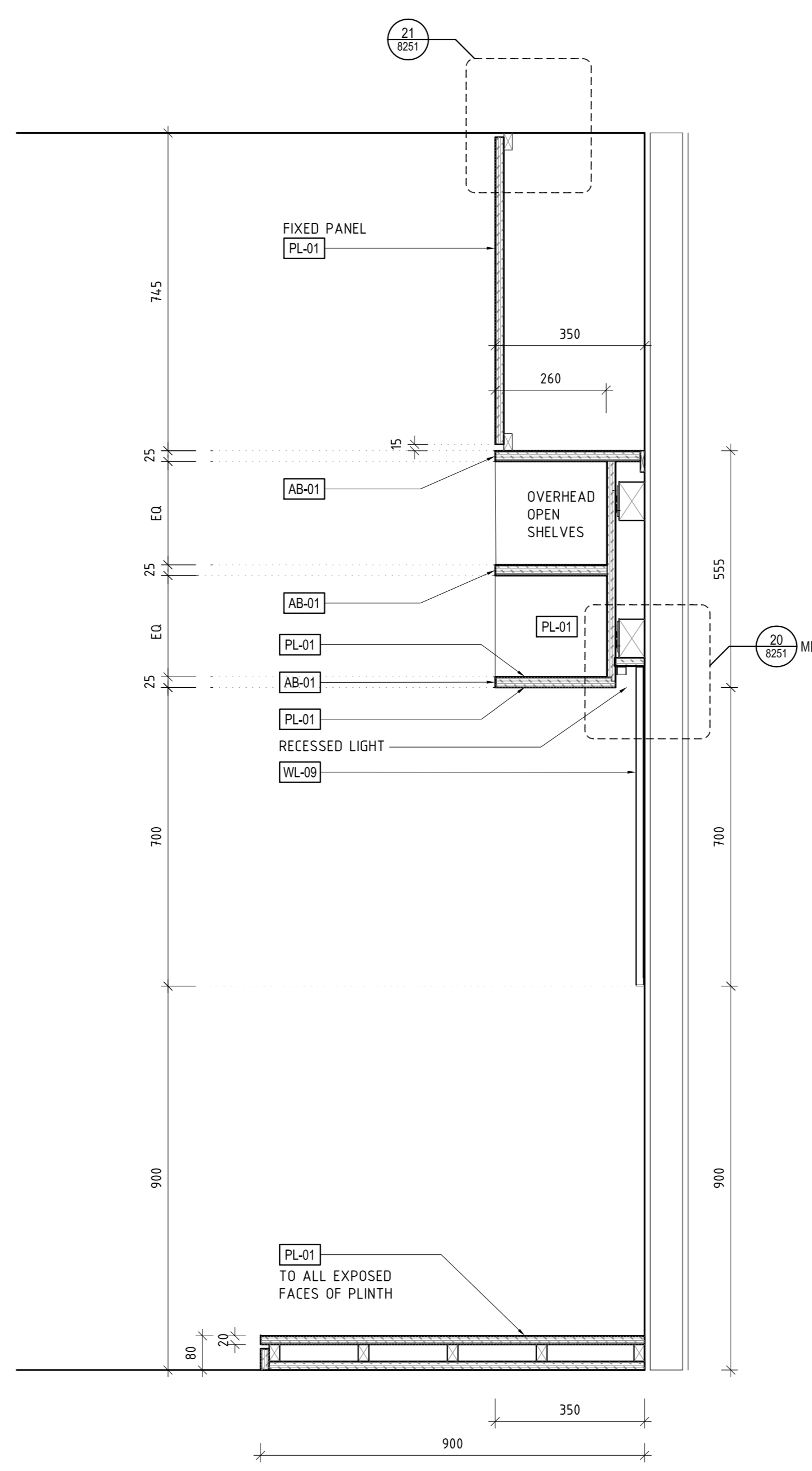
06 J02-28A - SECTION
SCALE 1:10
J01-34 SIMILAR
J01-35 SIMILAR



07 J02-28A - SECTION
SCALE 1:10
J01-34 SIMILAR
J01-35 SIMILAR

06 REMOVED
SCALE 1:10

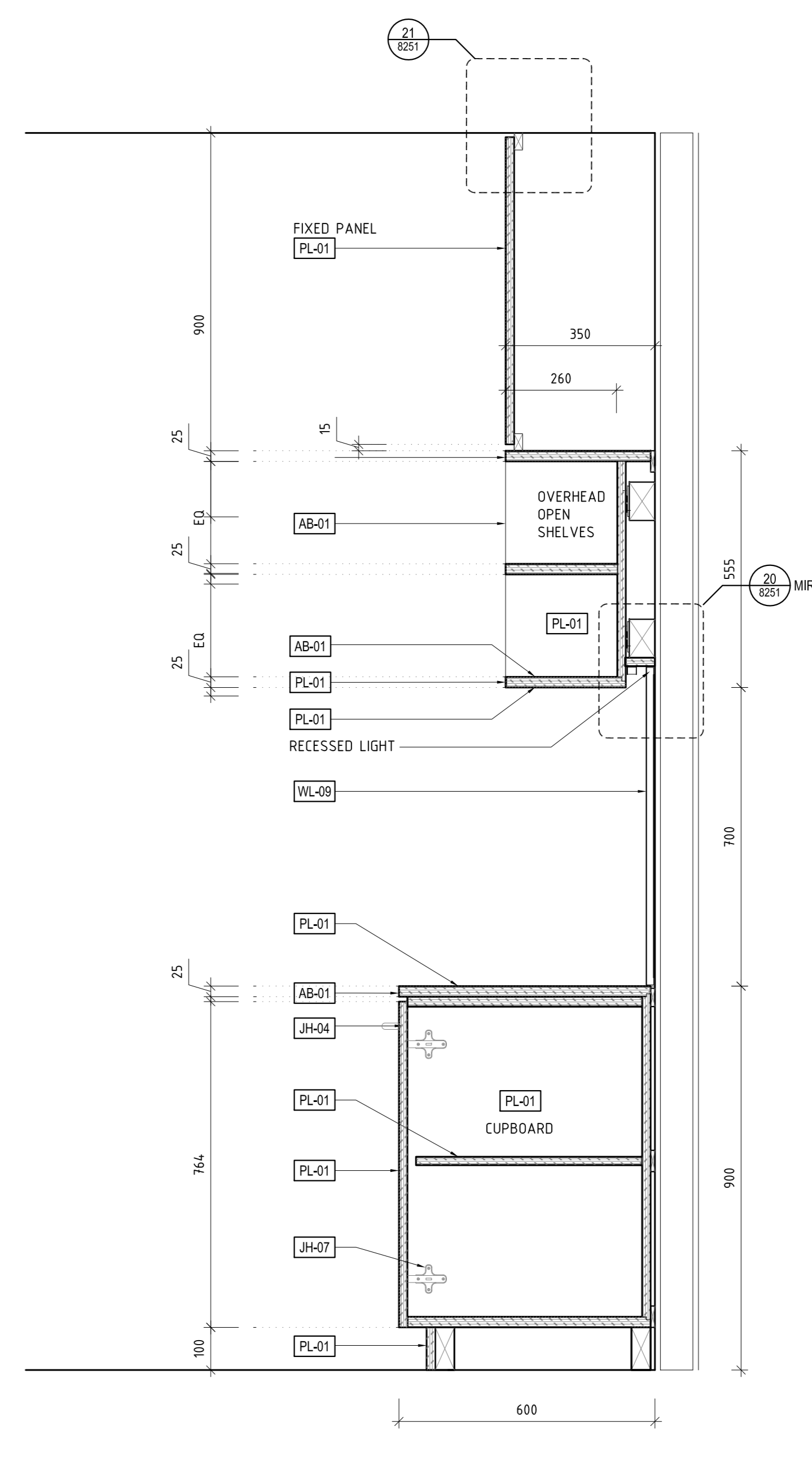
05 REMOVED
SCALE 1:10



04 REMOVED
SCALE 1:10

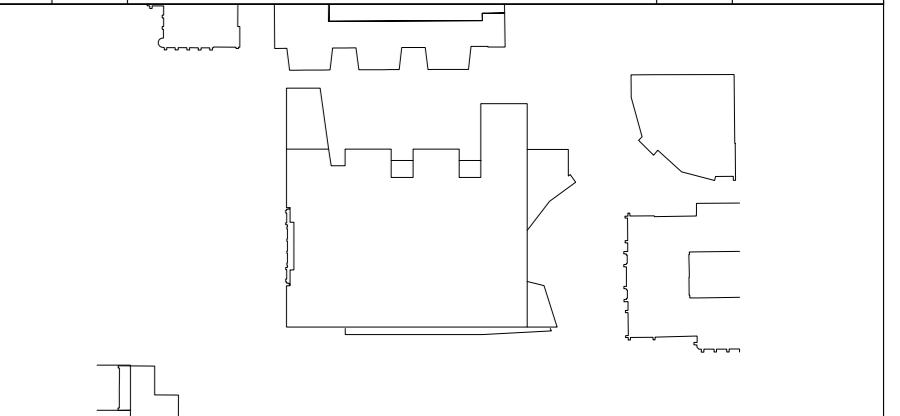
03 REMOVED
SCALE 1:10

04 J04-17-SECTION
SCALE 1:10
J02-11 SIMILAR
J02-16 SIMILAR
J03-06 SIMILAR
J03-19 SIMILAR
J04-07 SIMILAR



05 J04-17-SECTION
SCALE 1:10
J02-11 SIMILAR
J03-15 SIMILAR
J03-19 SIMILAR

Rev	Issue	Revision Description	Amt	Date
A	SG	CONSTRUCTION ISSUE	-	19.12.13
04	SG	VALUE MANAGEMENT ISSUE	-	28.03.13
03	JC	100% CD - TENDER ISSUE	-	07.09.12
02	JC	90% CD ISSUE	-	10.08.12
01	JC	75% CD ISSUE	-	13.07.12



NADAAA
NADAAA
1520 Washington Street No.2 Boston Massachusetts 02118 USA
Telephone +1 617 442 6232
Facsimile +1 604 442 1417
Email nad@nadaaa.com

John Wardle Architects
© 2011 John Wardle Architects
Level 10, 180 Russell Street, Melbourne Victoria 3000 Australia
Tel : +613 9654 8700 www.johnwardlearchitects.com

Client **University of Melbourne Parkville Campus**

Project **Faculty of Architecture Building and Planning**

Title **JOINERY DETAILS L02 & L04**

Project No. **0913** Scale 1:10 @ A0
Drawing No. **AR8204** Revision **A**

Date: DEC 2013 Dwn - Co-Ord - Chk -

FILENAME - #####

FOR CONSTRUCTION